

SEA FORCE®

WILLARD 670 SOLAS Rigid Inflatable Boats Government Series



US Coast Guard Approved No. 160.156/6/1

The Willard Sea Force 670 SOLAS Rescue Boat is designed and built to meet all USCG/SOLAS standards required for SOLAS rescue boats.

All of our USCG/SOLAS approved models are built and tested at our Anaheim, California facility to meet the latest USCG requirements. Each boat undergoes individual testing and evaluation by independent inspectors during the construction and testing phase to insure they meet all requirements.

A number of special options are offered on the Sea Force 670 SOLAS model. These options include the Single Point Lifting Frame and Offload Release Hook, the Self-Righting Frame and System, and a USCG approved inboard diesel engine with water jet propulsion.

In addition, the special Miranda Davit option is available as well.

Willard Marine is a leading manufacturer of fiberglass and aluminum boats for the United States Navy and Coast Guard having delivered over 1,000 craft. In addition to delivering over 400 R.I.B.s to the Navy, Willard supplies Personnel Boats, Utility Boats and Target Boats. For the U.S. Coast Guard, Willard Marine has produced Ports and Waterways Boats, Surf Rescue Boats and R.I.B.s. Most recently the Long Range Interceptor for the USCG Deepwater Program.

Willard Marine, Inc. has the proven capability and experience to design and build R.I.B.s to meet stringent, specific and demanding requirements including high performance in conjunction with the lowest weights for shipboard use by military and commercial customers.



670 SOLAS R.I.B.

SEA FORCE®



Standard Specifications

- Heavy duty fiberglass hull and deck construction
- All inorganic materials (no wood) used in boat construction
- High density foam inserts at all high strength connections
- Pigmented color gel coat finish on all molded surfaces
- Two longitudinal girders with four transverse bulkheads, full height from hull to deck underside
- Limber holes installed to allow drainage of water to bilge area
- Heavy duty 5-chambered 22" dia. grey Hypalon coated inflatable tubes
- Tube inboard lifelines and heavy duty rub strakes
- Two high capacity deck drains with elephant trunks
- Stainless steel fasteners type 316 throughout
- Emergency Tiller
- Boat Hook
- Heavy-duty 40 gal. Aluminum Fuel Tank

WILLARD 670 SOLAS R.I.B.



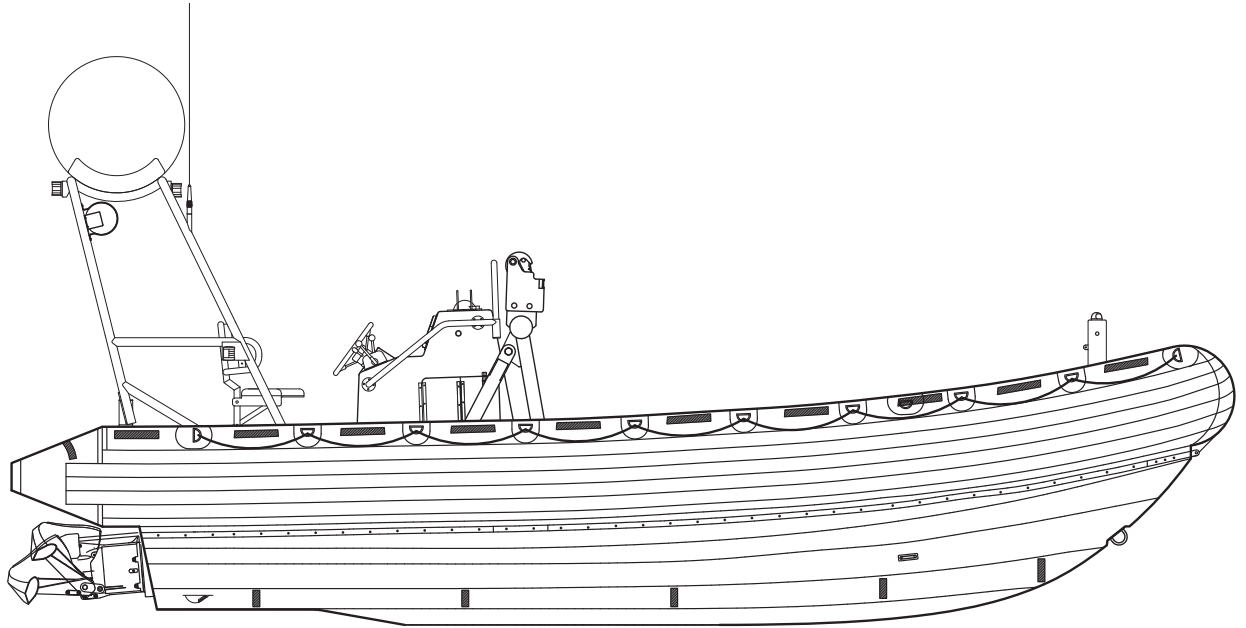
Options (Partial List)

- Two 5 lb Fire Extinguishers
- Tube Repair Kit
- SOLAS Kit
- Boat Manual
- USCG/SOLAS Rescue Boat Certificate
- Inboard Diesel Engine, Complete with a Water Jet as Approved by the USCG
- Stainless Steel 4-Point Lift Pads for Single Point Sling Pick-up
- Lifting Sling
- Searchlight
- 2 Boat Paddles w/Pockets
- Full Height Transom w/Stainless Steel Transcom Cap and 2 Tow Bollards
- Self Righting System & Frame
- Single Point Lifting System
- Single Point Lifting Hook
- Miranda Davit Lifting System



SEA FORCE®

WILLARD 670 SOLAS R.I.B. Government Series



WILLARD 670 SOLAS R.I.B.

Specifications

- Length Overall 6.7m (22')
- Inside Length 5.58m (18' 3")
- Beam Overall 2.7m (9')
- Inside Beam 1.63m (64")
- Draft, Light 0.36m (16")
- Draft, Loaded 0.53m (22")
- Tube Diameter 0.59m (22")
- Maximum HP 230
- Weight Light 4,125 lbs
- Maximum Capacity 2,075 lbs
(with Passengers, Fuel & Max. hp)
- Number of Persons Approved 9
- Weight (at Max. Capacity) 6,200 lbs

Specifications subject to change without notice.

The Anaheim, California, Willard Marine facilities, with their modern manufacturing and testing equipment for high-tech composite and aluminum boats, have a CAD engineering department where marine design and manufacturing projects are handled with expertise, ingenuity and enthusiasm. The company's technology and construction expertise continues to set industry standards. All boats are sea-trialed and tested in the water at company leased facilities in Long Beach Harbor, California before shipment to destination.

Configuration management is exercised on all multiple boat contracts. All boats meet the American Boat and Yacht Counsel (ABYC) Standards and Recommended Practices.

Willard Marine, Inc. is classified as a "Small Business" by the U.S. Government and is an Equal Opportunity Employer with an Affirmative Action Program. All products are included in the company's GSA contract, GS - 07F - 0123H.



1250 N. Grove St., Anaheim, CA 92806 714-666-2150 Fax 714-632-8136 www.willardmarine.com