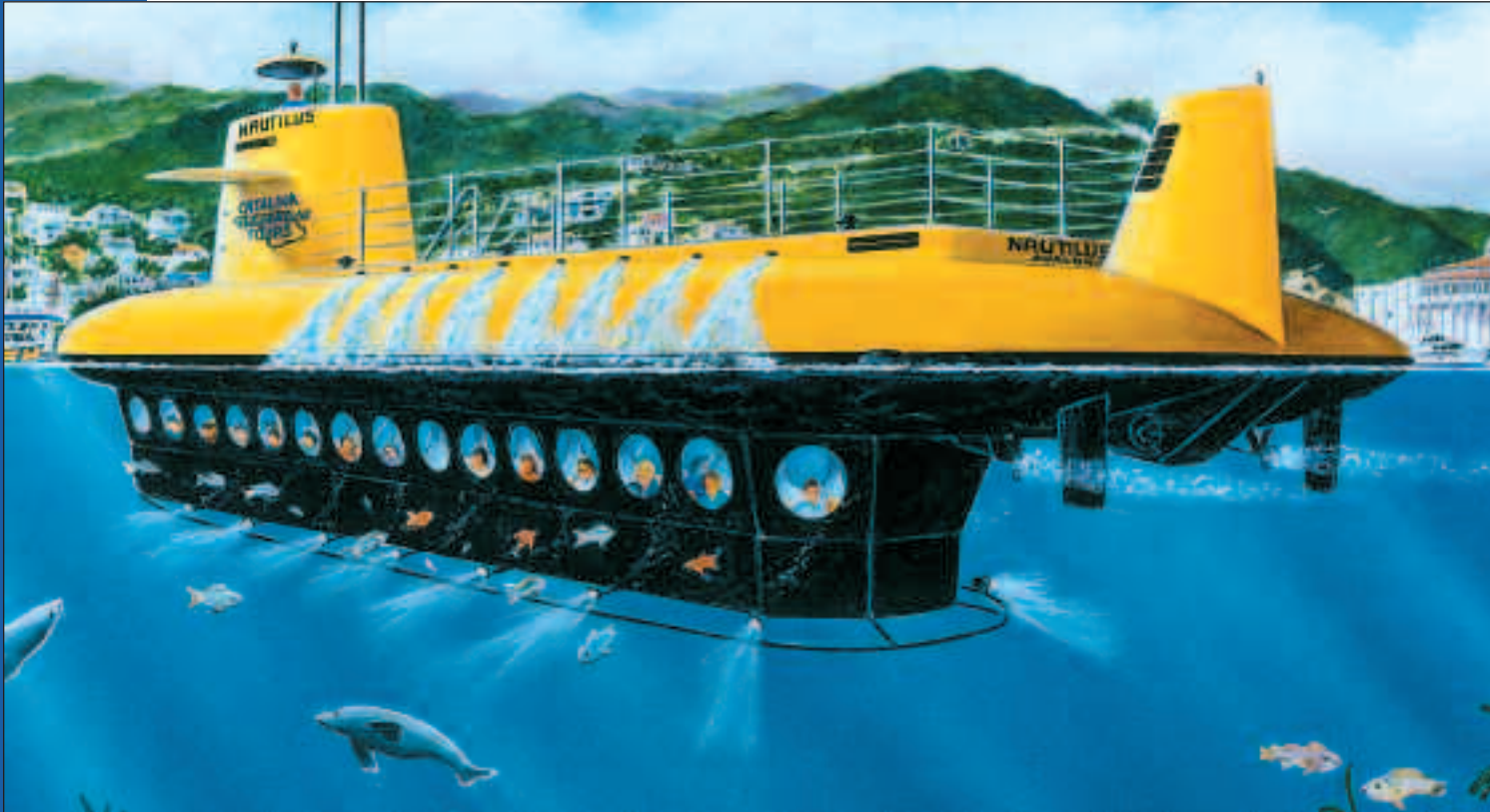


# 65' FRP Semi-Submersible Viewing Vessel



## *New Generation Vessel*

Launched and very profitably operating is the first semi-submersible 49-passenger viewing vessel completely built in high-strength, low maintenance fiberglass reinforced plastic (FRP). Boat number one, named SS NAUTILUS, was constructed at the Willard Marine plant in Anaheim, California for Catalina Adventure Tours, Inc. of Catalina Island, California, for use out of Avalon, Catalina, to explore and view the coastal waters and sea life.

An investment has been made in the molds for this vessel so that sisterships can be constructed and receive U.S. Coast guard passenger approval in an expeditious and cost-effective manner.

This vessel is the perfect destination activity for cruise ship passengers and the tourist trade. In the right operating environment, this unique vessel will amortize its capital cost in two to three years. The revenue from the special Fish Feeder Concession option can pay for the crew cost! A visit to your site to help develop an operations and economic plan is available.



Nautilus



Nautilus

### Specifications

- Builder Willard Marine, Inc.
- Designer Allen Andrews Design
- NAUTILUS Owner Catalina Adventure Tours, Inc.
- Use Semi-Submersible Underwater Viewing Vessel
- Length 65'
- Beam 16.5'
- Depth (Molded) 10'
- Draft 6.3'
- Displacement 203,000 Lbs., including 123,000 Lbs. of Ballast
- Mail Propulsion Two 120 SHP Diesel Engines
- Marine Gear Twin Disc, V-Drives, Model 506
- Controls Kobelt, Dual Lever
- Steering System Marol Hyd. MRB-50
- Speed 7 Knots
- Hull Construction Solid FRP Construction to Comply with ABS Rules
- Underwater Windows Twenty-eight (28) at 26" Diameter
- Crew/Passenger Capacity 2 Crew/49 Passengers
- Capacities Fuel—300 Gal.
- Certification U.S.C.G. Approved, Small Passenger Vessel, 49 Passengers

# Nautilus Class 65' FRP Semi-Submersible Viewing Vessel



## Optional Equipment

- |                                |   |
|--------------------------------|---|
| • Engines                      | Various Manufacturers and Ratings                               |
| • Generator                    | For 110 VAC or 220 VAC Power                                    |
| • Thrusters                    | Bow and Stern   |
| • Head                         | Located in Sail   |
| • Air Conditioning             | Requires Generator Option                                       |
| • Underwater Lighting          | For Night Viewing, Requires Generator Option                    |
| • Fish Feeder Concession       | Power Operated with Torpedo-like Action, at Each Viewing Window |
| • Multimedia                   |   |
| Video/Stereo System            | Custom Created for each Vessel and Location                     |
| • Electronics                  | As per User Requirements  |
| • Safety Items                 | As Required by U.S.C.G. for Route                               |
| • Anchoring and Deck Equipment | As Required for Local Conditions                                |

# 65' FRP Semi-Submersible Viewing Vessel



## *Principal Dimensions*

- Length Overall 65'
- Beam Overall 16.5'
- Draft 6.3'
- Displacement 203,000 Lbs.
- Capacity 49 Passengers  
U.S.C.G. Approved

A number of special options are available, some of which may be desirable for a particular operating environment. A DECK PLAN and ARRANGEMENT PLAN drawings with full specification are available upon request. Additional vessel photographs are available on the Willard Marine Web Site at [willardmarine.com](http://willardmarine.com) and at [catalinaadventuretours.com](http://catalinaadventuretours.com)

## *For Further Information, Contact One of the Following Persons:*

Jack B. Hochadel  
Willard Marine, Inc.  
Anaheim, CA  
714-666-2150 Ext.216  
e-mail: [jhochadel@willardmarine.com](mailto:jhochadel@willardmarine.com)

Jeffrey W. Stickler  
Catalina Adventure Tours, Inc.  
Long Beach, CA  
562-432-8828  
e-mail: [jeffstickler@catalinaadventuretours.com](mailto:jeffstickler@catalinaadventuretours.com)



1250 N. Grove St., Anaheim, CA 92806 714-666-2150 Fax 714-632-8136 [willardmarine.com](http://willardmarine.com)